

Borgmoer, metrische schroefdraad

M

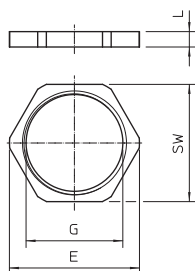
Tegenmoer conform DIN 46319 met metrische schroefdraad conform IEC 423.

* Prijzen volgens DEL-notering.



| Type | Schroef- draad | SW mm | Afm. E mm | Afme- ting L mm | Verp. Stuk | Gewicht kg/100 st. | Bestelnr. |
|-------------------|-------------------|----------|-----------------|-----------------------|---------------|-----------------------|----------------|
| 169 MS M12 | M12 x 1,5 | 15 | 16,6 | 3 | 100 | 0,220 | 2091607 |
| 169 MS M16 | M16 x 1,5 | 20 | 22,1 | 2,8 | 100 | 0,310 | 2091615 |
| 169 MS M20 | M20 x 1,5 | 24 | 25,6 | 3 | 100 | 0,580 | 2091623 |
| 169 MS M25 | M25 x 1,5 | 30 | 33,2 | 3,5 | 100 | 0,880 | 2091631 |
| 169 MS M32 | M32 x 1,5 | 35 | 38,7 | 4 | 100 | 1,120 | 2091658 |
| 169 MS M40 | M40 x 1,5 | 45 | 49,8 | 4,5 | 50 | 1,920 | 2091666 |
| 169 MS M50 | M50 x 1,5 | 55 | 60,4 | 5,5 | 50 | 3,070 | 2091674 |
| 169 MS M63 | M63 x 1,5 | 70 | 77,6 | 6 | 25 | 5,720 | 2091682 |
| 169 MS M75 | M75 x 1,5 | 90 | 100 | 8 | 3 | 16,800 | 2091685 |

Afmetingen



CuZn messing

N vernikkeld