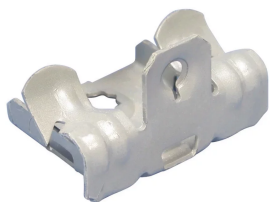




SPANTKLEM, MONTAGE AAN ONDERKANT, VERENSTAAL, 14–20 MM FLENS, M6

CATALOG NUMBER

EM912



CERTIFICATIONS



FEATURES

Geschikt om kabeldozen of lichte armaturen aan balkflenzen te bevestigen.

Met verschillende bevestigingspunten om voorraad te verminderen

Vereist enkel een hamer om te installeren

PRODUCT ATTRIBUTES

Article Number: 170070

Material: Veerstaal

Finish: nVent CADDY gepantserd

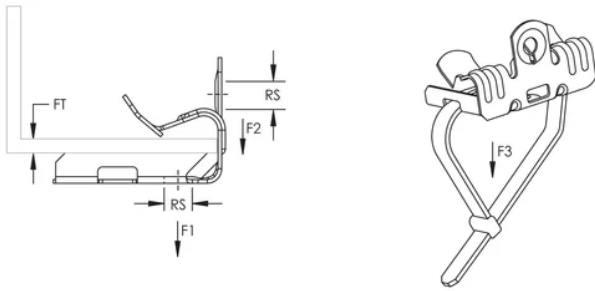
Flange Thickness: 14 – 20 mm

Rod Size: M6

Static Load 1: 450 N

Static Load 2: 110 N

DIAGRAMS



WARNING

nVent products shall be installed and used only as indicated in nVent's product instruction sheets and training materials. Instruction sheets are available at www.nvent.com and from your nVent customer service representative. Improper installation, misuse, misapplication or other failure to completely follow nVent's instructions and warnings may cause product malfunction, property damage, serious bodily injury and death and/or void your warranty.

Noord-Amerika

+1.800.753.9221
Option 1 – Customer Care
Option 2 – Technical Support

Europa

Netherlands:
+31 800-0200135
France:
+33 800 901 793

Europa

Germany:
800 1890272
Other Countries:
+31 13 5835404

APAC

Shanghai:
+ 86 21 2412 1618/19
Sydney:
+61 2 9751 8500



Our powerful portfolio of brands:
nVent.com **CADDY ERICO HOFFMAN RAYCHEM SCHROFF**
TRACER