

### SMART Sensor 5D 19f

Ambient light sensor for lighting control



#### Product description

- \_ Optional ambient light sensor for PCA EXCEL one4all, PCA ECO and PCA BASIC devices from the xit<sup>ec</sup> II generation
- \_ With ambient light dependent control
- \_ Simple setting of the set-point via integrated momentary-action switch at the sensor
- \_ Compact dimensions for luminaire installation
- \_ Simple cable connection to the ballast via SMART interface
- \_ Power supply via ballast
- \_ Max. installation height 5 m
- \_ 5-year guarantee

#### Website

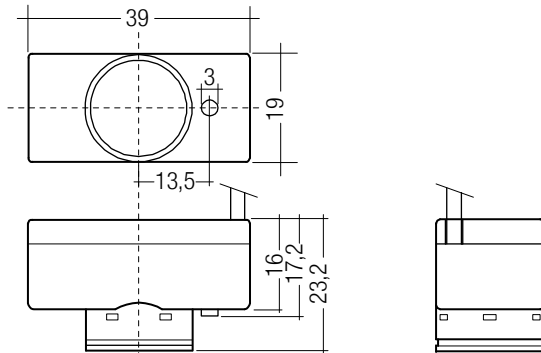
<http://www.tridonic.com/28000888>



**SMART Sensor 5D 19f**

Ambient light sensor for lighting control

The complete data sheet for this product is available in the Downloads section.

**Ordering data**

| Type                | Article number | Packaging, carton |
|---------------------|----------------|-------------------|
| SMART Sensor 5D 19f | 28000888       | 20 pc(s).         |

**Technical data**

|                               |                           |
|-------------------------------|---------------------------|
| Supply via                    | SMART interface           |
| Current draw                  | 1 mA from SMART interface |
| Operating temperature         | 0 ... +70 °C              |
| Storage temperature $t_s$     | -20 ... +75 °C            |
| Type of protection            | IP20                      |
| Max. casing temperature $t_c$ | 73 °C                     |

**Approval marks****Standards**

EN 61547, EN 61347-1, EN 61347-2-11, EN 55015

**Specific technical data**

| Type                | Detection                       |   |  |                   |                          |
|---------------------|---------------------------------|---|--|-------------------|--------------------------|
|                     | Light detection angle symmetric | Light measurement at the sensor head <sup>①</sup> | Illuminance (factory default) <sup>②</sup> | Max. cable length | Control output (devices) |
| SMART Sensor 5D 19f | 42 °                            | 40 – 1,000 lx                                     | 500 lx                                     | 0.8 m             | 1                        |

① The measured value at the sensor head corresponds to approx. 60 to 3,000 lux on the surface measured.

② The illuminance is set for a room defined by Tridonic. Depending on the actual room (reflectance) the measured illuminance may deviate from this value. The illuminance should therefore be checked in the installation and adjusted if necessary.