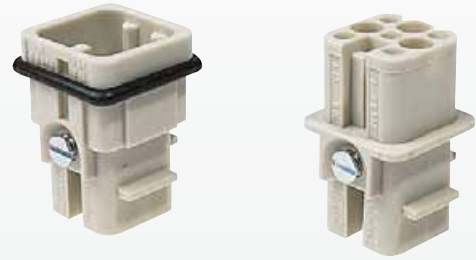


Number of contacts

8



Inserts

Han D/DD

Identification	Series	Part No.		Drawing	Dimensions in mm
		Male insert (M)	Female insert (F)		
<p><b>Crimp terminal</b> Order Crimp contacts separately</p> <p>For thermoplastic and metal hoods/housings</p>	Han D®	<b>09 36 008 3001</b>	<b>09 36 008 3101</b>	<p>M</p> <p>F</p>	<p>Contact arrangement View from termination side</p>
<p><b>Coding system with loss of contact</b></p>		<b>09 33 000 9915</b>	<p>To avoid accidental incorrect mating of adjacent connectors a coding system is required. Coding is effected-by means of a code pin to be inserted into the selected chamber of the female insert. The opposite male contact should be omitted.</p>		

Identification	Wire gauge (mm²)	Part No.		Drawing	Dimensions in mm
		Male contacts	Female contacts		
<p><b>Crimp contacts</b></p> <p>silver plated</p>	0.14-0.37 0.5 0.75 1.0 1.5 2.5	<p><b>09 15 000 6104</b> <b>09 15 000 6103</b> <b>09 15 000 6105</b> <b>09 15 000 6102</b> <b>09 15 000 6101</b> <b>09 15 000 6106</b></p>	<p><b>09 15 000 6204</b> <b>09 15 000 6203</b> <b>09 15 000 6205</b> <b>09 15 000 6202</b> <b>09 15 000 6201</b> <b>09 15 000 6206</b></p>		
<p>gold plated</p>	0.14-0.37 0.5 0.75 1.0 1.5 2.5	<p><b>09 15 000 6124</b> <b>09 15 000 6123</b> <b>09 15 000 6125</b> <b>09 15 000 6122</b> <b>09 15 000 6121</b> <b>09 15 000 6126</b></p>	<p><b>09 15 000 6224</b> <b>09 15 000 6223</b> <b>09 15 000 6225</b> <b>09 15 000 6222</b> <b>09 15 000 6221</b> <b>09 15 000 6226</b></p>		
<p><b>FOC contacts for 1 mm plastic fibre</b></p>		<b>20 10 001 3212</b>	<b>20 10 001 3222</b>		

Wire gauge	ø	Stripping length
0.14-0.37 mm²	0.90 mm	8 mm
0.5 mm²	1.10 mm	8 mm
0.75 mm²	1.30 mm	8 mm
1 mm²	1.45 mm	8 mm
1.5 mm²	1.75 mm	8 mm
2.5 mm²	2.25 mm	6 mm

Stock items in bold type