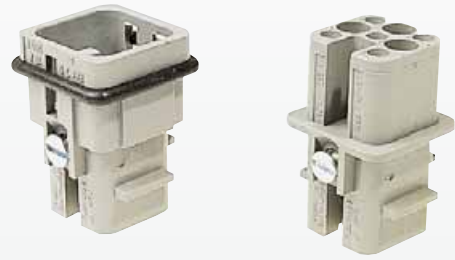


Number of contacts

7 +



Inserts

Han D/DD

Identification	Series	Part No.		Drawing	Dimensions in mm
		Male insert (M)	Female insert (F)		
<b>Crimp terminal</b> Order crimp contacts separately	Han D®	<b>09 21 007 3031<sup>1)</sup></b>	<b>09 21 007 3131<sup>1)</sup></b>	M   F 	<b>Contact arrangement</b> View from termination side 
<b>Coding system with loss of contact</b>  		<b>09 33 000 9915</b>	To avoid accidental incorrect mating of adjacent connectors a coding system is required. Coding is effected by means of a code pin to be inserted into the selected chamber of the female insert. The opposite male contact should be omitted.  		

Identification	Wire gauge (mm <sup>2</sup> )	Part No.		Drawing	Dimensions in mm
		Male contacts	Female contacts		
<b>Crimp contacts</b>  silver plated	0.14-0.37 0.5 0.75 1.0 1.5 2.5	<b>09 15 000 6104</b> <b>09 15 000 6103</b> <b>09 15 000 6105</b> <b>09 15 000 6102</b> <b>09 15 000 6101</b> <b>09 15 000 6106</b>	<b>09 15 000 6204</b> <b>09 15 000 6203</b> <b>09 15 000 6205</b> <b>09 15 000 6202</b> <b>09 15 000 6201</b> <b>09 15 000 6206</b>		
gold plated	0.14-0.37 0.5 0.75 1.0 1.5 2.5	<b>09 15 000 6124</b> <b>09 15 000 6123</b> <b>09 15 000 6125</b> <b>09 15 000 6122</b> <b>09 15 000 6121</b> <b>09 15 000 6126</b>	<b>09 15 000 6224</b> <b>09 15 000 6223</b> <b>09 15 000 6225</b> <b>09 15 000 6222</b> <b>09 15 000 6221</b> <b>09 15 000 6226</b>		
<b>FOC contacts for 1 mm plastic fibre</b>		<b>20 10 001 3212</b>	<b>20 10 001 3222</b>		

Wire gauge	ø	Stripping length
0.14-0.37 mm <sup>2</sup>	AWG 26-22	0.90 mm
0.5 mm <sup>2</sup>	AWG 20	1.10 mm
0.75 mm <sup>2</sup>	AWG 18	1.30 mm
1 mm <sup>2</sup>	AWG 18	1.45 mm
1.5 mm <sup>2</sup>	AWG 16	1.75 mm
2.5 mm <sup>2</sup>	AWG 14	2.25 mm

Stock items in bold type