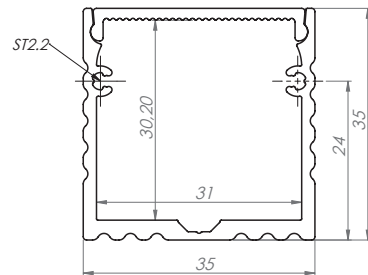


POWER LINE 35mm

PLA; 35x35mm

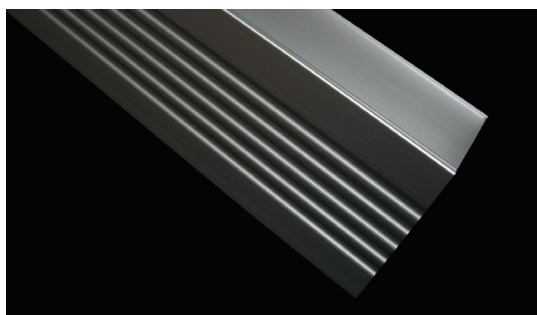
FEATURES:

- High standard of anodizing aluminum surface
- High Quality UV resistant polycarbonate snap in diffuser
- Two different light diffusers to choice from, frosted (LEDs dots free) and transparent.
- LEDs DOTS FREE design (frosted diffuser)
- Contemporary design which can be suspended from the ceiling or surface installed
- Suitable for standard or high power LED stripes up to 30W/m
- Available on stock in anodized silver color
- Possible length and color customizing at MOQ
- Available on stock with dedicated accessories such as two type of end caps
- Indoor use only, IP20

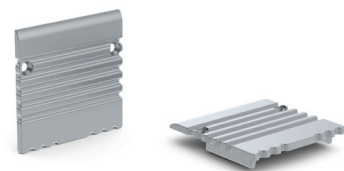
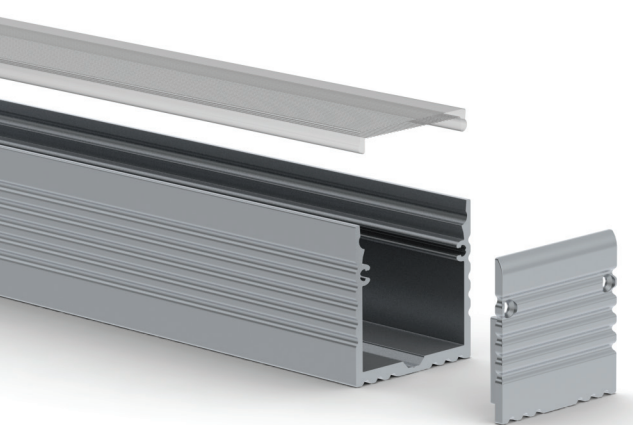


APPLICATIONS:

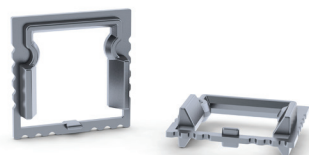
- LED lamp component
- Retail store main ceiling LED lighting
- Suspended LED lighting lamp
- Exhibitions, hotels, restaurants main LED lighting
- Decorative linear LED lighting
- Exhibition boot LED lighting



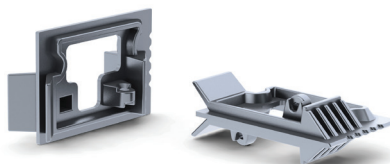
AL-PLA
AB-PLA
EC-PLA



End caps type EC-PLA



Linear Connector LC-PLA



90° Connector 90-LC-PLA

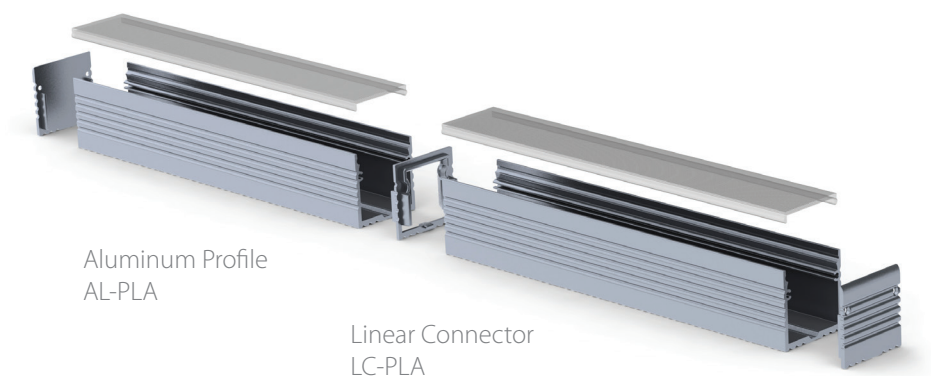


DESCRIPTION

This profile is dedicated to be use as the LED lighting xtture for main lighting at the offices, libraries show rooms or above the kitchen table. It is made from anodized aluminum and is suitable for up to 32mm wide high power LED bars.

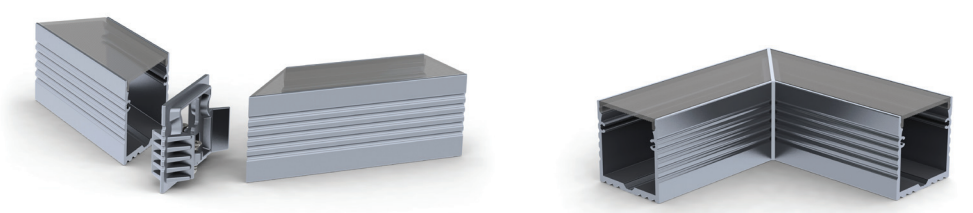
The profile can be suspended from the ceiling on the stainless still wires or can be screw it directly to the surface. Profile comes with polycarbonate UV resistant frosted or transparent diffuser placed and removed from the front on click.

We have designed two types of nished end cups for two dierent installation options. Profile is available in length of 1m or 2m.



Aluminum Profile AL-PLA

Linear Connector LC-PLA



90° Connector 90-LC-PLA

End Caps EC-PLA