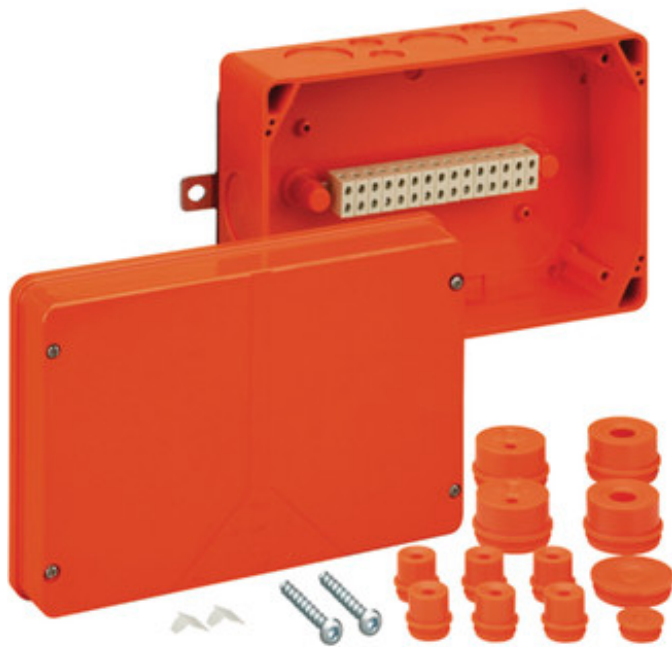




CABLE JUNCTION BOX

# WKE 5 - 15 x 6<sup>2</sup>



## WKE 5 - 15 x 6<sup>2</sup>

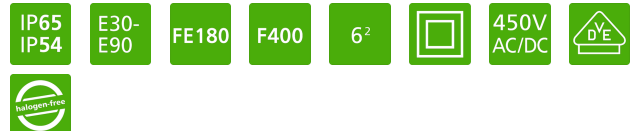
Cable junction box

**CUSTOMIZABLE**

171 x 256 x 106 mm  
Article number: 86050501

Cable junction and connection box with IP54 / IP65 certified acc. EN 60670, with intrinsic fire resistance E30 - E90 acc. DIN 4102 Part 12, with isolation integrity FE180 acc. IEC 60331-11 as well as functional life F400 acc. EN 12101, halogen-free housing made from special duroplastic, terminals made from high temperature-proof special ceramics, rapid mounting thanks to external brackets and wall + ceiling attachment set D6

Connection box 15-pole 0.5 - 6 mm<sup>2</sup>, Junction box 15-pole 0.5 - 1.5 mm<sup>2</sup>, Number of conductors per clamping point:, 8 x 0.5<sup>2</sup> / 4 x 0.75<sup>2</sup> / 6 x 1<sup>2</sup> / 6 x 1.5<sup>2</sup> / 2 x 2.5<sup>2</sup> / 2 x 4<sup>2</sup> / 2 x 6<sup>2</sup>, Accessories supplied:, Drilling template, wall + ceiling attachment set D6, 6 attachment bushes M20, seal range 8 - 13 mm, 2 double end connectors M40, seal range 17 - 30 mm, 1 blanking plug M20, 1 blanking plug M40



## Technical data

### Measures

Width:	171 mm
Length:	256 mm
Height:	106 mm

### Material

Base:	Duroplastic
Cover:	Duroplastic
Sealing:	Polyurethane

## Accessory

- VST M40-or
- AST M40-or
- KVR M40-MGM/or
- KVR M32-MGM/or
- VST M32-or
- AST M32-or
- AST M20-or
- AST M25-or
- KVR M20-MGM/or
- KVR M25-MGM/or



CABLE JUNCTION BOX

# WKE 5 - 15 x 6<sup>2</sup>

Cover screw: stainless steel  
V2A

VST M20-or

VST M25-or

## Other attributes

Color: orange

Entries: 16

Rated cross section: 6 mm<sup>2</sup>

Tackable: No

Rated insulation voltage AC: 450 V

Explosion safety: none

Fire protection: E 90

sealable: No

Weatherproof: Yes

Heavy metals-free: Yes

PVC-free: Yes

Silicone-free: Yes

Ingress protection: IP65 - acc. EN  
60529 / DIN VDE  
0470-1

Equiptment: Terminal

## Environmental attributes

Ambient temperature (min.): -25 °C

Ambient temperature (max.): 40 °C

Ambient temperature (24 h): 35 °C

Max. rel. humidity at 25° C (short  
Therm): 95%

Max. rel. humidity at 40° C: 50%