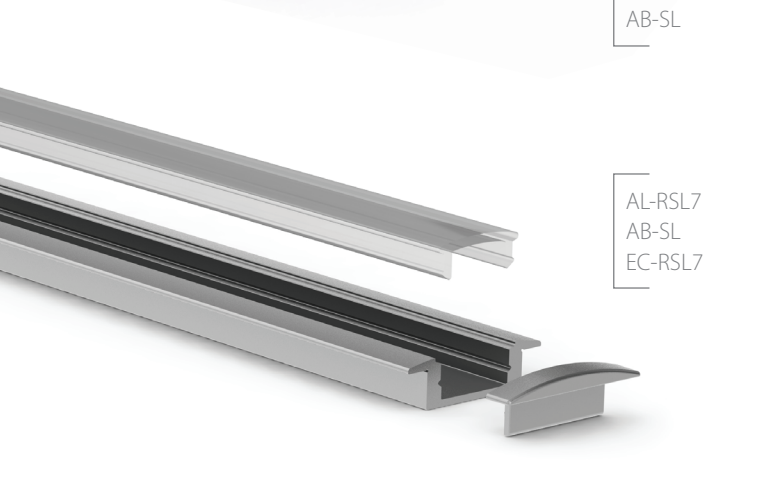


AL-RSL7  
AB-SL



AL-RSL7  
AB-SL  
EC-RSL7

# RECESSED SLIM LINE 7mm

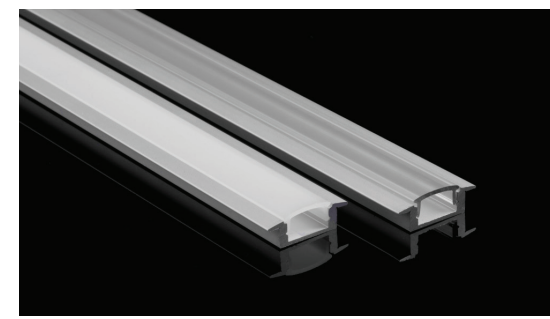
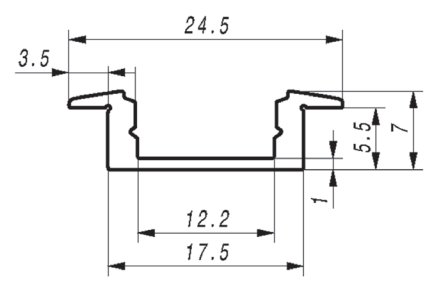
RSL7; 7 x 24,5mm

### FEATURES:

- Recessed type with clean design
- Cover up the edges of the mill Vely low profile, only 7mm high Perfect for low power LED stripes
- Diffuser placed/removed from the top Designed for indoor use only
- Available with frosted or clear diffuser
- Made from aluminum / anodized

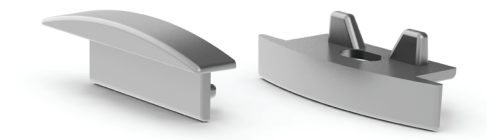
### APPLICATIONS:

- Kitchen cabinets LED lighting
- Furniture production
- Interior accent lighting
- Shop shelf exposition



### DESCRIPTION

Recessed Slim Line 7mm LED profile it is dedicated for build-in into surface material. The profile can be recess into any kind of surface and the expending to the sides the profile "wings" covers the mill row completely. This type of profile is often use for build in underneath kitchen cabinets LED lighting, retail store shelf lighting, floor, stairs, walls or ceiling accent LED lighting. The profile itself is generally dedicated for standard up to 12mm LED stripes. The profile is performing as the heat sink to the LEDs and appears as nice, stylish housing for the LEDs itself. It comes with choice of three different quality UV resistant, snap-in diffusers, frosted, 50% frosted and transparent. For RSL7 LED profile we offer some accessories such as finish end caps which helps to professionally finish the profile.



EC-RSL7  
End Caps

