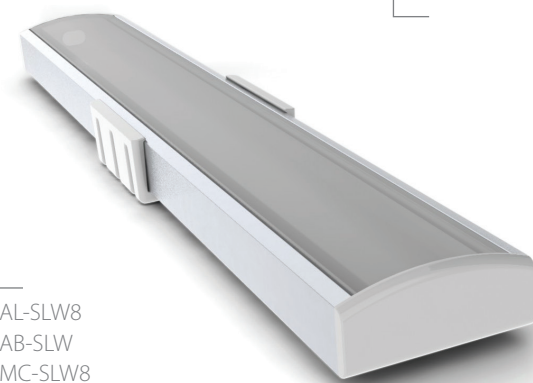




AL-SLW8  
AB-SLW



AL-SLW8  
AB-SLW  
MC-SLW8  
EC-SLW8



EC-SLW8  
End Caps

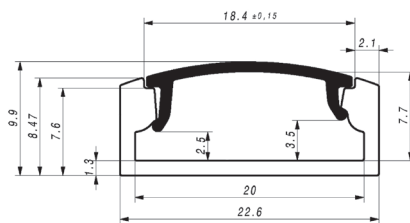
MC-SLW8  
Mounting Bracket

## SLIM LINE WIDE 8mm

SLW8; 8 x 22,6mm

### FUTURES:

- High standard of anodizing aluminum surface
- High Quality UV resistant polycarbonate snap in diffuser
- Two different light diffusers to choice from, frosted or transparent.
- Reduced light lost design
- Small dimensions only 8mm high
- Extra space inside the profile (20mm) for IP67 led ribbons, RGB or double row LED stripe
- Available on stock in anodized silver color
- Possible length and color customizing at MOQ
- Available with dedicated accessories such as end caps and mounting brackets
- Indoor use only, IP20



### APPLICATIONS:

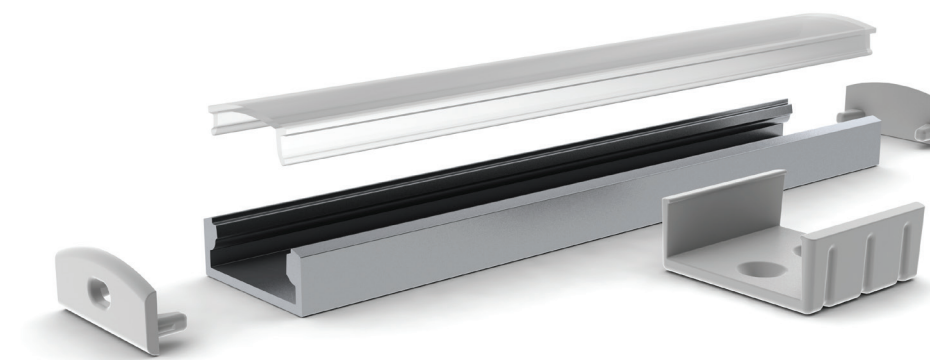
- Led lamps
- Retail store shelf LED lighting
- Kitchen cabinets LED lighting
- Exhibitions, hotels, restaurants LED lighting
- Interior design linear LED lighting



### DESCRIPTION

Slim Line Wide 8mm, surface mount profile has been design and made for wider then standard (10/12mm) LED stripes.

The wideness inside the profile is 20mm and can accommodate any type of the led stripes available on the market such as double row LED stripes, RGB strips, digital RGB ribbons or waterproof ribbons in single color or RGB version which do not fit into standard profile. The wide diffuser is not cutting down the angle of the LEDs and presents itself as the quality product. The profile it is available with two snap-in UV resistant diffusers, frosted and transparent. The larger amount of aluminum it is performing as the heat sink to the LEDs and also appears as the nice looking housing. The installation can be easily and professionally finish with available accessories such as end caps and mounting brackets.



EC-SLW8

AL-SLW8

MC-SLW8

