

Technical Data

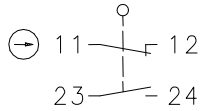
Safety switch

Series ENK – with separate actuator

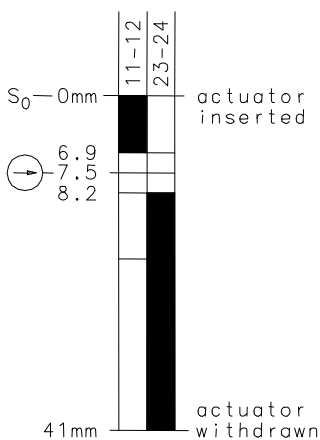
Description **ENK-U1Z VTU**



Article number **6016619132**

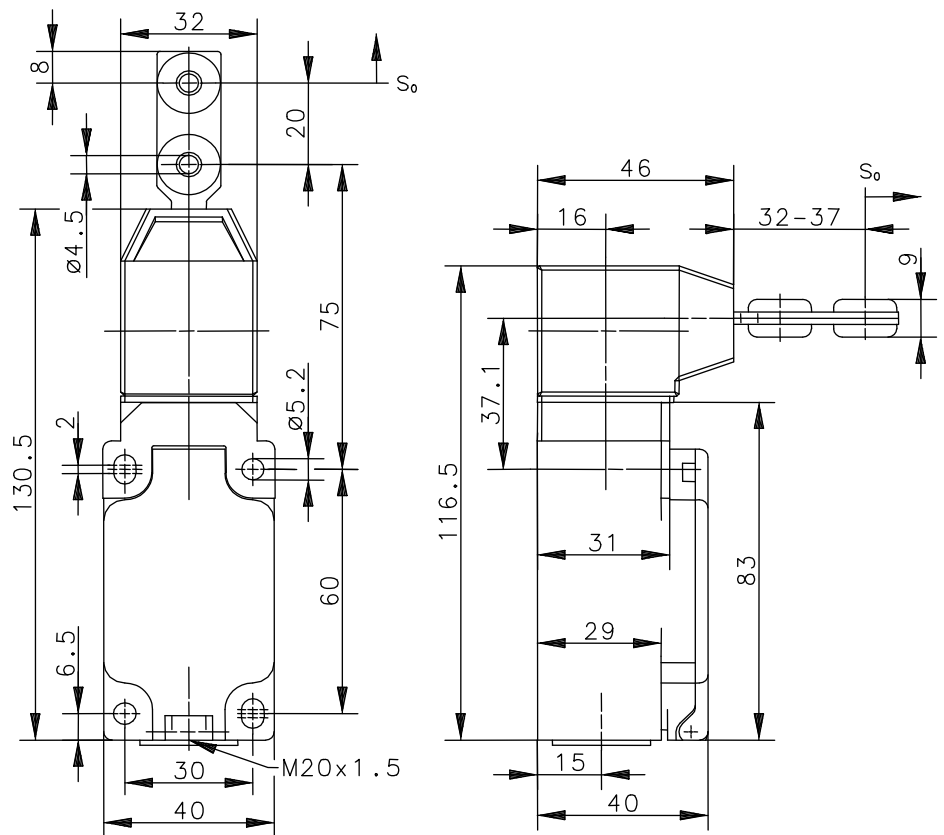
Operating symbol




Operating diagram





Tolerance
 ON OFF **Actuating force: ± 10%**



Electrical data

Rated insulation voltage	U_i	400 V AC
Conv. thermal current	I_{the}	10 A
Rated operational voltage	U_e	240 V
Utilization category		AC-15, U_e/I_e 240 V / 3 A
Positive opening NC contact		IEC/EN 60947-5-1
Short-circuit protective device		Fuse 10 A gG IEC/EN 60947-5-1, Annex K
Protection class		II, totally insulated

This document will not become the contractual basis; the details included herein do not constitute any descriptions of expected conditions, so that warranties/claims for defects on account of possible variations of the actual qualities from the qualities described herein are explicitly excluded. All rights reserved. Specifications subject to change without notice!

Date of issue: 17.05.2013 / Page 1 of 2
 Document : 6016619132_en / Last update: 2 / 2396-13

Mechanical data	
Enclosure	Thermoplastic, glass fibre reinforced (UL 94-V0)
Cover	Thermoplastic, glass fibre reinforced (UL 94-V0)
Actuator head	PA6 GV/Zn-GD
Actuator	Separate actuator (St / PA)
Minimum actuating radius	R_{\min} 400 mm
Velocity for actuating	V_{\max} $\leq 0,5 \text{ m/s}$
Extraction force	$\leq 20 \text{ N}$
Ambient air temperature	-30 °C ... +80 °C
Contact type	1 N.C, 1 N.O (Zb)
Mechanical life	1×10^6 switching cycles
Switching frequency	$\leq 30 / \text{min.}$
Assembly	4 x M5
Connection	4 screw connections (M3,5)
Conductor cross-sections	Solid: 0,5 ... 1,5 mm ² Litz wire with ferrules: 0,5 ... 1,5 mm ²
Cable entrance	1 x M20 x 1,5
Weight	$\approx 0,23 \text{ kg}$
Installation position	Operator definable
Protection type	IP65 acc. to EN 60529; DIN VDE 0470 T1
ID for safety engineering	
B10d	2×10^6 switching cycles

Actuation	
8 different actuating directions achievable by rotating the actuating head in steps 45°. Changing between horizontal and vertical actuating direction by setting the actuating head in the requested direction.	
Standards	
VDE 0660 T100, DIN EN 60947-1, IEC 60947-1 VDE 0660 T200, DIN EN 60947-5-1, IEC 60947-5-1 DIN EN ISO 13849-1	

EU Conformity	
acc. to directive 2006/42/EC	

Approvals	
DGUV cCSA _{US} A300 (same polarity)	

Notes	
The degree of protection (IP code) specified applies solely to a property closed cover and the use of an equivalent cable gland with adequate cable. The switch may not be used as a mechanical stop.	

This document will not become the contractual basis; the details included herein do not constitute any descriptions of expected conditions, so that warranties/claims for defects on account of possible variations of the actual qualities from the qualities described herein are explicitly excluded. All rights reserved. Specifications subject to change without notice!

Date of issue: 17.05.2013 / Page 2 of 2
Document : 6016619132_en / Last update: 2 / 2396-13