

According to IEC 60947-3, EN 60947-3, VDE 0660 part 107



Rated Thermal Current $I_U/I_{th}/I_{the}$				A	25
Rated Insulation Voltage $U_i$ <sup>1</sup>				V	690
Rated Impulse Withstand Voltage $U_{imp}$				kV	4
Rated Operational Current $I_e$					
AC-21A	Switching of resistive loads, including moderate overloads			A	25
AC-22A	Switching of combined resistive or low inductive loads including moderate overloads		220 V–500 V	A	20
			660 V–690 V		20
Rated Utilization Category					
AC-3	Direct-on-line starting	3 phase, 3 pole	220 V–240 V	kW	4
			380 V–440 V		5,5
			500 V		5,5
			660 V–690 V		5,5
AC-23A	Frequent switching of motors or other high inductive loads	3 phase, 3 pole	220 V–240 V	kW	5,5
			380 V–440 V		7,5
			500 V		7,5
			660 V–690 V		7,5
Breaking Capacity					
			220 V–240 V	A	180
			380 V–440 V		180
			660 V–690 V		125
Short Circuit Protection					
Max. fuse size		gG-characteristic		A	35
Rated short-time withstand current		(1 s-current)		A	350
For connections with insulated ring and fork type cable terminal - copper wires only					
	Single-core or stranded wire			mm <sup>2</sup>	6
	Flexible wire			mm <sup>2</sup>	4
	Flexible wire with sleeving in accordance with DIN 46228			mm <sup>2</sup>	4

<sup>1</sup> Valid for lines with grounded common neutral termination, overvoltage category III, Other values on request.

### Miscellaneous

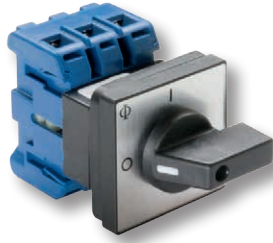
Minimum Voltage:	on request	
Power loss per contact at $I_U$ :	0,7 W	
Resistance to vibration:	min. 4 g, 2-100 Hz, 1,6 mm	
Resistance to shock:	min. 5 g, 6 ms	
Ambient Temperature of Stages :	open at 100 % $I_U/I_{th}$	50 °C during 24 hours with peaks up to 55 °C
	enclosed at 100 % $I_{the}$	35 °C during 24 hours with peaks up to 40 °C
Storage temperature:	-40 °C to 85 °C (in case of temperature below -5 °C no shock load permissible)	

### Approvals and Standards

IEC 60947  
EN 60947



### USA / Canada



Rated Thermal Current $I_U/I_{th}/I_{the}$				A	25
Rated Insulation Voltage $U_i$				V	600
Rated Operational Current $I_e$					
Pilot Duty:			Heavy	VAC	A600
Ampere Rating	Resistive or low inductive loads	ON/OFF 1-0-2	600 V	A	25
			600 V		25
Max. Permissible Wire Gage - copper wires only					
Single-core or stranded wire				AWG	10
Flexible wire: AWG wire (without sleeving)				AWG	10
Ratings					
Standard motor load, DOL-Rating (similar AC-3)	3 phase 3 pole		110 V – 120 V	HP	1,5
			220 V – 240 V		3
			440 V – 480 V		5
			550 V – 600 V		5

### Miscellaneous

Minimum Voltage:	on request	
Power loss per contact at $I_U$ :	0,7 W	
Resistance to vibration:	min. 4 g, 2-100 Hz, 1,6 mm	
Resistance to shock:	min. 5 g, 6 ms	
Ambient Temperature of Stages :	open at 100 % $I_U/I_{th}$	50 °C during 24 hours with peaks up to 55 °C
	enclosed at 100 % $I_{the}$	35 °C during 24 hours with peaks up to 40 °C
Storage temperature:	-40 °C to 85 °C (in case of temperature below -5 °C no shock load permissible)	

### Approvals and Standards

IEC 60947  
EN 60947

