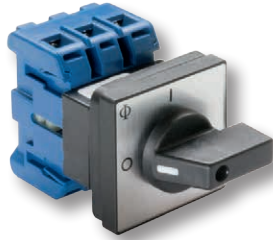


According to IEC 60947-3, EN 60947-3, VDE 0660 part 107



Rated Thermal Current $I_U/I_{th}/I_{the}$				A	32
Rated Insulation Voltage U_i ¹				V	690
Rated Impulse Withstand Voltage U_{imp}				kV	6
Rated Operational Current I_e					
AC-21A	Switching of resistive loads, including moderate overloads			A	32
AC-22A	Switching of combined resistive or low inductive loads including moderate overloads		220 V–500 V	A	32
			660 V–690 V	A	32
Rated Utilization Category					
AC-3	Direct-on-line starting	3 phase, 3 pole	220 V–240 V	kW	5,5
			380 V–440 V		7,5
			500 V		7,5
			660 V–690 V		7,5
AC-23A	Frequent switching of motors or other high inductive loads	3 phase, 3 pole	220 V–240 V	kW	5,5
			380 V–440 V		11
			500 V		11
			660 V–690 V		11
Breaking Capacity					
			220 V–240 V	A	220
			380 V–440 V		220
			660 V–690 V		135
Short Circuit Protection					
Max. fuse size		gG-characteristic		A	35
Rated short-time withstand current		(1 s-current)		A	430
For connections with insulated ring and fork type cable terminal - copper wires only					
Single-core or stranded wire				mm ²	6
Flexible wire				mm ²	4
Flexible wire with sleeving in accordance with DIN 46228				mm ²	4

¹ Valid for lines with grounded common neutral termination, overvoltage category III, Other values on request.

Miscellaneous

Minimum Voltage:	on request	
Power loss per contact at I_U :	1,1 W	
Resistance to vibration:	min. 4 g, 2-100 Hz, 1,6 mm	
Resistance to shock:	min. 5 g, 6 ms	
Ambient Temperature of Stages :	open at 100 % I_U/I_{th}	50 °C during 24 hours with peaks up to 55 °C
	enclosed at 100 % I_{the}	35 °C during 24 hours with peaks up to 40 °C
Storage temperature:	-40 °C to 85 °C (in case of temperature below -5 °C no shock load permissible)	

Approvals and Standards

IEC 60947
EN 60947



USA / Canada



Rated Thermal Current $I_U/I_{th}/I_{the}$				A	30
Rated Insulation Voltage U_i				V	600
Rated Operational Current I_e					
Pilot Duty:			Heavy	VAC	A600
Ampere Rating	Resistive or low inductive loads	ON/OFF 1-0-2	600 V	A	30
			600 V	A	30
Max. Permissible Wire Gage - copper wires only					
Single-core or stranded wire				AWG	10
Flexible wire: AWG wire (without sleeving)				AWG	10
Ratings					
Standard motor load, DOL-Rating (similar AC-3)		3 phase 3 pole	110 V-120 V 220 V-240 V 440 V-480 V 550 V-600 V	HP	2 5 10 10

Miscellaneous

Minimum Voltage:	on request	
Power loss per contact at I_U :	1,1 W	
Resistance to vibration:	min. 4 g, 2-100 Hz, 1,6 mm	
Resistance to shock:	min. 5 g, 6 ms	
Ambient Temperature of Stages :	open at 100 % I_U/I_{th} enclosed at 100 % I_{the}	50 °C during 24 hours with peaks up to 55 °C 35 °C during 24 hours with peaks up to 40 °C
Storage temperature:	-40 °C to 85 °C (in case of temperature below -5 °C no shock load permissible)	

Approvals and Standards

IEC 60947
EN 60947

