

**Han® 4 A** Metal Version

Part-Number

Dimensions in mm

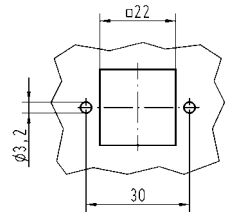
**Han-Kit®-4AGM**

Hood Han® 3 A straight  
 Bulkhead mounted hous.<sup>1)</sup> Han® 3 A straight  
 Material Die cast zinc alloy  
 Protection degree<sup>2)</sup> IP 67  
 Cable gland M20, metal  
 Cable diameter 5 - 9 mm / 6 - 12 mm  
 Insert Han® 4 A, 4-pins + PE  
 Screw terminal 1-2.5 mm<sup>2</sup>, AWG 18-14  
 Electrical data accd. to DIN EN 61 984<sup>3)</sup>  
**10 A 230/400 V 4kV 3**  
 Rated current  
 Rated voltage conductor-ground  
 Rated voltage conductor-conductor  
 Rated impulse voltage  
 Pollution degree  
 Rated voltage accd. to UL/CSA 600 V

10 20 004 0001



Assembly cut out bulkhead mounted housing 22 x 22 mm



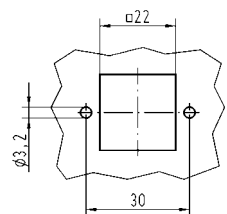
**Han-Kit®-4AWM**

Hood Han® 3 A straight  
 Bulkhead mounted hous.<sup>1)</sup> Han® 3 A angled  
 Material Die cast zinc alloy  
 Protection degree<sup>2)</sup> IP 67  
 Cable gland M20, metal  
 Cable diameter 5 - 9 mm / 6 - 12 mm  
 Insert Han® 4 A, 4-pins + PE  
 Screw terminal 1-2.5 mm<sup>2</sup>, AWG 18-14  
 Electrical data accd. to DIN EN 61 984<sup>3)</sup>  
**10 A 230/400 V 4kV 3**  
 Rated current  
 Rated voltage conductor-ground  
 Rated voltage conductor-conductor  
 Rated impulse voltage  
 Pollution degree  
 Rated voltage accd. to UL/CSA 600 V

10 20 004 0003



Assembly cut out bulkhead mounted housing 22 x 22 mm



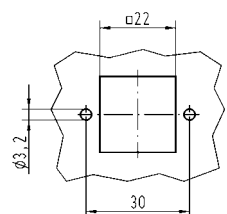
**Han-Kit®-4AWSM**

Hood Han® 3 A angled  
 Bulkhead mounted hous.<sup>1)</sup> Han® 3 A straight  
 Material Die cast zinc alloy  
 Protection degree<sup>2)</sup> IP 67  
 Cable gland M20, metal  
 Cable diameter 5 - 9 mm / 6 - 12 mm  
 Insert Han® 4 A, 4-pins + PE  
 Screw terminal 1-2.5 mm<sup>2</sup>, AWG 18-14  
 Electrical data accd. to DIN EN 61 984<sup>3)</sup>  
**10 A 230/400 V 4kV 3**  
 Rated current  
 Rated voltage conductor-ground  
 Rated voltage conductor-conductor  
 Rated impulse voltage  
 Pollution degree  
 Rated voltage accd. to UL/CSA 600 V

10 20 004 0005



Assembly cut out bulkhead mounted housing 22 x 22 mm



- 1) Bulkhead mounted housing with flange gasket
- 2) Protection degree acc. to DIN EN 60 529 in locked position
- 3) For only use in grounded circuits

## Han® 6 B

Part-Number

Dimensions in mm

### Han-Kit®-6B

Hood<sup>1)</sup> Han® 6 B  
 Material Die cast aluminium alloy  
 Protection degree<sup>2)</sup> IP 65  
 Cable gland M20, metal  
 Cable diameter 5 - 9 mm / 6 - 12 mm

Insert Han® 6 E, 6-pins + PE  
 Screw terminal 1-2.5 mm<sup>2</sup>, AWG 18-14

Electrical data accd. to DIN EN 61 984<sup>3)</sup>

**16 A 500 V 6kV 3**

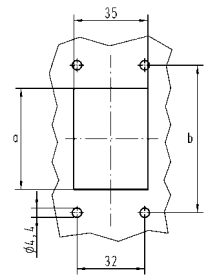
Rated current  
 Rated voltage<sup>3)</sup>  
 Rated impulse voltage  
 Pollution degree

Rated voltage  
 accd. to UL/CSA 600 V

10 33 006 0000



Dimensions in mm	Han-Kit 6 B
a	48
b	70
Assembly cut out bulkhead mounted housing	48x35



## Han® 10 B

Part-Number

Dimensions in mm

### Han-Kit®-10B

Hood<sup>1)</sup> Han® 10 B  
 Material Die cast aluminium alloy  
 Protection degree<sup>2)</sup> IP 65  
 Cable gland M25, metal  
 Cable diameter 9 - 16 mm / 13 - 18 mm

Insert Han® 10 E, 10-pins + PE  
 Screw terminal 1-2.5 mm<sup>2</sup>, AWG 18-14

Electrical data accd. to DIN EN 61 984<sup>3)</sup>

**16 A 500 V 6kV 3**

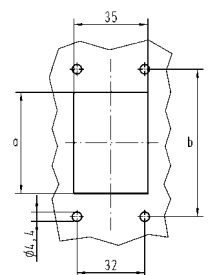
Rated current  
 Rated voltage<sup>3)</sup>  
 Rated impulse voltage  
 Pollution degree

Rated voltage  
 accd. to UL/CSA 600 V

10 33 010 0000



Dimensions in mm	Han-Kit 10 B
a	60
b	83
Assembly cut out bulkhead mounted housing	60 x 35



1) Bulkhead mounted housing with flange gasket  
 2) Protection degree acc. to DIN EN 60 529 in locked position  
 3) For use in a un-grounded circuit or a grounded delta circuit

## Han® 16 B

Part-Number

Dimensions in mm

### Han-Kit®-16B

Hood<sup>1)</sup> Han® 16 B  
 Material Die cast aluminium alloy  
 Protection degree<sup>2)</sup> IP 65  
 Cable gland M32, metal  
 Cable diameter 13-20 mm / 18-25 mm

Insert Han® 16 E, 16-pins + PE  
 Screw terminal 1-2.5 mm<sup>2</sup>, AWG 18-14

Electrical data accd. to DIN EN 61 984<sup>3)</sup>

**16 A 500 V 6kV 3**

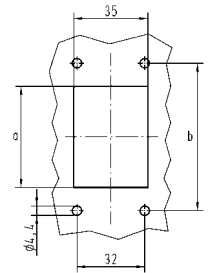
Rated current  
 Rated voltage<sup>3)</sup>  
 Rated impulse voltage  
 Pollution degree

Rated voltage  
 accd. to UL/CSA 600 V

10 33 016 0000



Dimensions in mm	Han-Kit 16 B
a	82
b	103
Assembly cut out bulkhead mounted housing	82 x 35



## Han® 24 B

Part-Number

Dimensions in mm

### Han-Kit®-24B

Hood<sup>1)</sup> Han® 24 B  
 Material Die cast aluminium alloy  
 Protection degree<sup>2)</sup> IP 65  
 Cable gland M32, metal  
 Cable diameter 13-20 mm / 18-25 mm

Insert Han® 24 E, 24-pins + PE  
 Screw terminal 1-2.5 mm<sup>2</sup>, AWG 18-14

Electrical data accd. to DIN EN 61 984<sup>3)</sup>

**16 A 500 V 6kV 3**

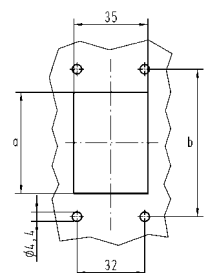
Rated current  
 Rated voltage<sup>3)</sup>  
 Rated impulse voltage  
 Pollution degree

Rated voltage  
 accd. to UL/CSA 600 V

10 33 024 0000



Dimensions in mm	Han-Kit 24 B
a	108
b	130
Assembly cut out bulkhead mounted housing	108x35



1) Bulkhead mounted housing with flange gasket  
 2) Protection degree acc. to DIN EN 60 529 in locked position  
 3) For use in a un-grounded circuit or a grounded delta circuit