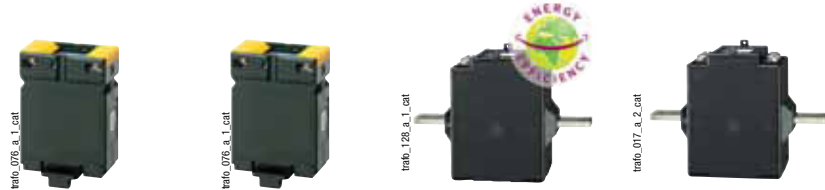


Primary wound moulded case CT

References



| Primary | Secondary ⁽¹⁾ | TRB 60 | | TRB 70 | | T2RB 115 | | TRB 135 | |
|---------|--------------------------|-----------|-----------|-----------|-----------|------------|-----------|-----------|-----------|
| | | Class 0.5 | Reference | Class 0.5 | Reference | Class 0.2s | Reference | Class 0.5 | Reference |
| 5 A | 5 A | 2.5 VA | 192T 0505 | 10 VA | 192T 0521 | | | | |
| 10 A | 5 A | 2.5 VA | 192T 0510 | 10 VA | 192T 0522 | | | | |
| 15 A | 5 A | 2.5 VA | 192T 0515 | 10 VA | 192T 0523 | | | | |
| 20 A | 5 A | 2.5 VA | 192T 0520 | 10 VA | 192T 0524 | | | | |
| 25 A | 5 A | | | 10 VA | 192T 0525 | 7.5 VA | 192U 0402 | 10 VA | 192T 0603 |
| 30 A | 5 A | | | 5 VA | 192T 0530 | 7.5 VA | 192U 0403 | 10 VA | 192T 0607 |
| 40 A | 5 A | | | 2.5 VA | 192T 0540 | 7.5 VA | 192U 0404 | 10 VA | 192T 0604 |
| 50 A | 5 A | | | | | 7.5 VA | 192U 0405 | 10 VA | 192T 0605 |
| 60 A | 5 A | | | | | 7.5 VA | 192U 0406 | 10 VA | 192T 0606 |
| 75 A | 5 A | | | | | 7.5 VA | 192U 0407 | 10 VA | 192T 0608 |
| 80 A | 5 A | | | | | 7.5 VA | 192U 0408 | 10 VA | 192T 0609 |
| 100 A | 5 A | | | | | | | 10 VA | 192T 0610 |
| 125 A | 5 A | | | | | 7.5 VA | 192U 0412 | 10 VA | 192T 0612 |
| 150 A | 5 A | | | | | 7.5 VA | 192U 0415 | 10 VA | 192T 0615 |

(1) Secondary 1 A: on request.

Accessories

| Description of accessories | TRB 60 Reference | TRB 70 Reference | TRB 135 Reference |
|----------------------------|------------------|------------------|-------------------|
| DIN rail mounting | 192T 0003 | 192T 0005 | |
| Sealable cover | 192T 0105 | 192T 0103 | 192T 0101 |

| CT Plug-in transducer (CEA-VA) | | TRB 60 Reference | TRB 70 Reference |
|--------------------------------|--------------------|------------------|------------------|
| Power supply | Output | | |
| Self supplied | 0-20 mA / 0-10 VDC | 192Y 0015 | 192Y 0025 |
| 230 VAC | 0-20 mA / 0-10 VDC | 192Y 0215 | 192Y 0225 |
| 24 VDC | 0-20 mA / 0-10 VDC | 192Y 0115 | 192Y 0125 |

| CT Plug-in transducer (CEA-VA4) | | TRB 60 Reference | TRB 70 Reference |
|---------------------------------|--------------------|------------------|------------------|
| Power supply | Output | | |
| 230 VAC | 4-20 mA / 0-10 VDC | 192T 0255 | 192T 0265 |
| 24 VDC | 4-20 mA / 0-10 VDC | 192Y 0155 | 192Y 0165 |



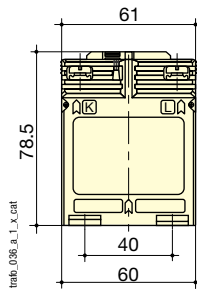
Certificate of performance

Each class 0.2s current transformer is supplied with an individual certificate of performance, attesting to its accuracy.

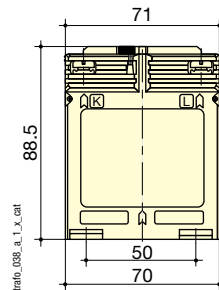
Primary wound moulded case CT

➔ Dimensions

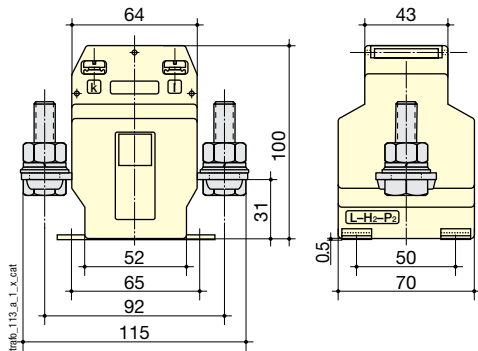
TRB 60



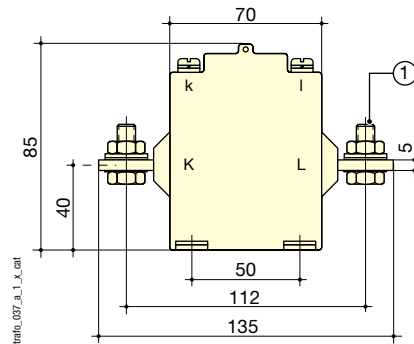
TRB 70



T2RB115



TRB 135



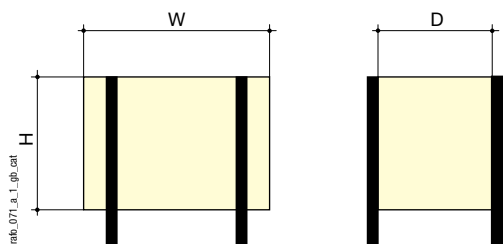
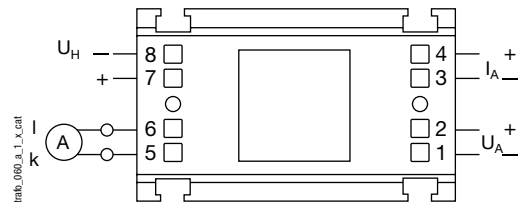
| Coiled primary CT | TRB 60 | TRB 70 | T2RB 115 | TRB 135 |
|--------------------|----------------|----------------|----------------|---------------|
| H x W x D (mm) | 78.5 x 61 x 35 | 88.5 x 71 x 45 | 115 x 100 x 70 | 85 x 135 X 60 |
| DIN rail mounting. | yes | yes | no | no |

➔ Associated transducers



Transducer to be associated with adapted current transformers:

- Class 0.5.
- Input: 1 or 5 A.
- Output:
 - 0-20 mA, 0-10 V (type CEA-VA)
 - 4-20 mA, 0-10 V (type CEA-VA4)
- Self-supplied or auxiliary power supply 24 VDC or 230 VAC.
- 3 sizes according to the CT: type 1, 2 or 3.



Dimensions (mm)

| Converter | For CT | Height (mm) | Width (mm) | Depth (mm) |
|-----------|--------|-------------|------------|------------|
| Type 1 | TRB 60 | 50.5 | 60 | 32.5 |
| Type 2 | TRB 70 | 50 | 70 | 43 |

Cable-through CT

References



| Primary | Secondary ⁽¹⁾ | TCA 21 | | TCA 22 | | T2CA 225 | | | |
|---------|--------------------------|---------|-----------|---------|-----------|----------|-----------|------------|-----------|
| | | Class 1 | Class 0.5 | Class 1 | Reference | Class 1 | Reference | Class 0.2s | Reference |
| 50 A | 5 A | 1 VA | | | 192T 2005 | | | | |
| 60 A | 5 A | 1.25 VA | | | 192T 2006 | | | | |
| 75 A | 5 A | 1.5 VA | | | 192T 2007 | | | | |
| 80 A | 5 A | 1.5 VA | | | 192T 2008 | | | | |
| 100 A | 5 A | | 1.5 VA | | 192T 2010 | 1 VA | 192T 2022 | | |
| 125 A | 5 A | | 1.5 VA | | 192T 2012 | 1 VA | 192T 2026 | | |
| 150 A | 5 A | | 1.5 VA | | 192T 2015 | 1.5 VA | 192T 2023 | 1.5 VA | 192U 2215 |
| 160 A | 5 A | 2.5 VA | | | 192T 2060 | | | | |
| 200 A | 5 A | | 2.5 VA | | 192T 2020 | 2.5 VA | 192T 2024 | 2.5 VA | 192U 2220 |
| 250 A | 5 A | | 2.5 VA | | 192T 2016 | 5 VA | 192T 2025 | 5 VA | 192U 2225 |
| 300 A | 5 A | | 5 VA | | 192T 2017 | 5 VA | 192T 2030 | 5 VA | 192U 2230 |
| 400 A | 5 A | | | | | 10 VA | 192T 2034 | 7.5 VA | 192U 2240 |
| 500 A | 5 A | | | | | 10 VA | 192T 2035 | 7.5 VA | 192U 2250 |
| 600 A | 5 A | | | | | 10 VA | 192T 2036 | 7.5 VA | 192U 2260 |

(1) Secondary 1 A: on request.

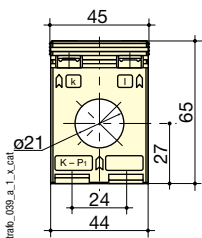
Accessories

| Description of accessories | TCA 21 Reference | TCA 22 Reference | T2CA 225 Reference |
|--|------------------|------------------|--------------------|
| DIN rail mounting | 192T 0006 | 192T 0007 | 192T 0003 |
| Copper guide tube \varnothing 8.5 mm ⁽¹⁾ | 192T 0020 | | |
| Copper guide tube \varnothing 12.5 mm ⁽¹⁾ | 192T 0021 | 192T 0023 | |
| Copper guide tube \varnothing 16.5 mm ⁽¹⁾ | | 192T 0024 | |
| Sealable cover | | | 192T 0105 |

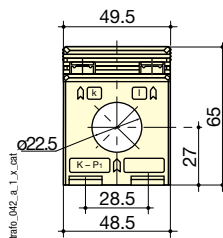
(1) For centralising small cables within the CT aperture.

Dimensions

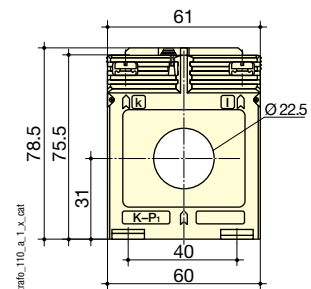
TCA 21



TCA 22



T2CA 225



| Cable-through CT | TCA 21 | TCA 22 | T2CA 225 |
|--------------------------|--------------|----------------|----------------|
| \varnothing cable (mm) | 21 | 22.5 | 22.5 |
| H x W x D (mm) | 65 x 45 x 30 | 65 x 49.5 x 35 | 78.5 x 61 x 35 |
| DIN rail mounting | yes | yes | yes |