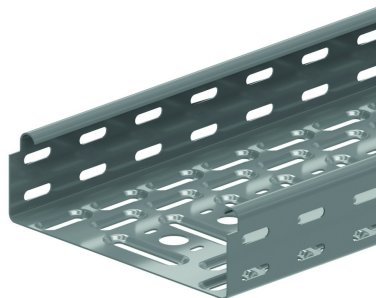


KBSI60

Chemin de câbles emboîtable

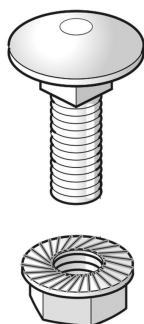
Extrémités emboîtables
Perforations perpendiculaires
Bords rabattus



Exec. Std.	Sendzimir
Mat. Opt.	Galvanisé à chaud
Mat. Opt. PE	Revêtement en poudre

HD	Référence	↑ mm	↔ mm	→ ← mm	↔ mm	kg/m	📦	Magasin	Unité
HD	KBSI60.075.100	60	75	1	3000	1,400	60	X	M
-	KBSI60.075.125	60	75	1,25	3000	1,750	60	X	M
HD	KBSI60.100.075	60	100	0,75	3000	1,170	60	X	M
HD	KBSI60.100.100	60	100	1	3000	1,560	60	X	M
-	KBSI60.100.125	60	100	1,25	3000	1,950	60	X	M
HD	KBSI60.150.075	60	150	0,75	3000	1,420	30	X	M
HD	KBSI60.150.100	60	150	1	3000	1,890	30	X	M
-	KBSI60.150.125	60	150	1,25	3000	2,360	30	X	M
HD	KBSI60.200.075	60	200	0,75	3000	1,660	30	X	M
HD	KBSI60.200.100	60	200	1	3000	2,220	30	X	M
-	KBSI60.200.125	60	200	1,25	3000	2,770	30	X	M
HD	KBSI60.300.075	60	300	0,75	3000	2,150	30	X	M
HD	KBSI60.300.100	60	300	1	3000	2,870	30	X	M
-	KBSI60.300.125	60	300	1,25	3000	3,580	30	X	M
HD	KBSI60.400.100	60	400	1	3000	3,520	30	X	M

A fixer avec:



Ecrou autobloquant et boulon à collet
VMK

