

# SIEMENS

## MICROMASTER

# Basic Operator Panel (BOP)

## Operating Instructions

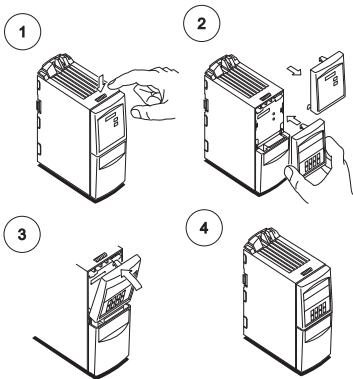


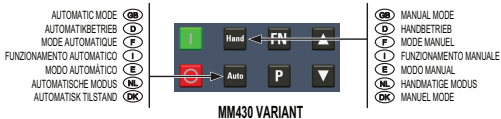
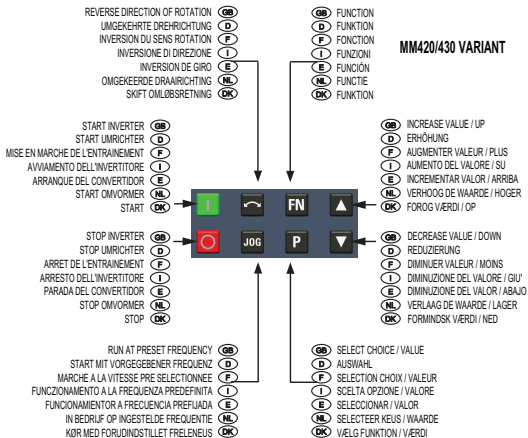


## Safety Information

- The BOP can be fitted to and removed from the inverter whilst power is applied.
- If the BOP has been set as the I/O control (P0700 = 1), the drive will stop if the BOP is removed.
- The BOP does not have an individual UL listing. When the BOP is fitted to the inverter the complete unit becomes a UL listed system.

## Fitting the Operator Panel





For more detailed information regarding the BOP, please refer to the relevant Operating Instructions of the Inverter.

For product support and further information, please visit:

<http://support.automation.siemens.com>



A 5 E 0 3 3 6 8 5 3 5 A 2

Printed in United Kingdom

January 2011

Siemens plc  
Industry Sector  
Drive Technologies  
Motion Control Systems  
Varey Road  
Congleton  
CW12 1PH  
United Kingdom