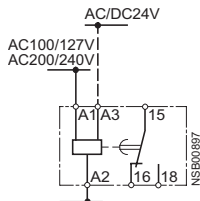


Schematics

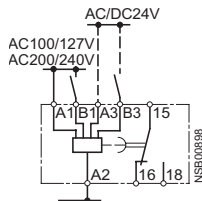
3RP15 internal schematics (terminal designation to DIN 46199, Part 5)

3RP15 05-.A
3RP15 1.
3RP15 25-.A



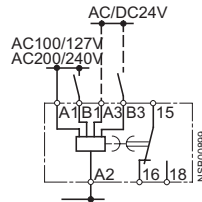
ON-delay

3RP15 05-.A
3RP15 3-.A



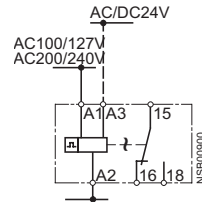
OFF-delay
with auxiliary voltage

3RP15 05-.A



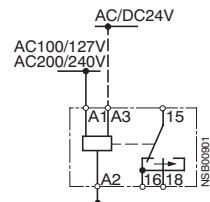
ON-delay and OFF-delay
with auxiliary voltage

3RP15 05-.A



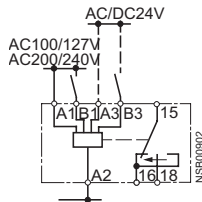
Flashing

3RP15 05-.A



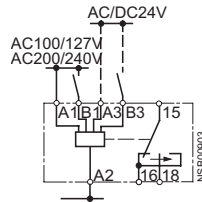
Passing make contact

3RP15 05-.A



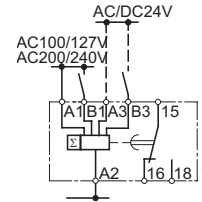
Passing break contact
with auxiliary voltage

3RP15 05-.A



Pulse-forming
with auxiliary voltage

3RP15 05-.A



Additive ON-delay
with auxiliary voltage

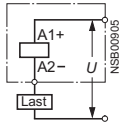
3RP Timing Relays

3RP15 timing relays in industrial enclosure, 22.5 mm

3RP15 27

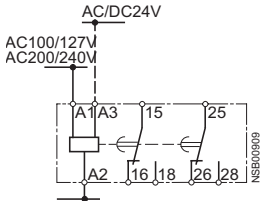
U = AC/DC 24 ... 66 V
AC/DC 90 ... 240 V

AC/DC 24-66V
AC/DC 90-240V



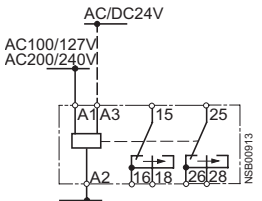
ON-delay,
two-wire version

3RP15 05-.B, 3RP15 25-1B



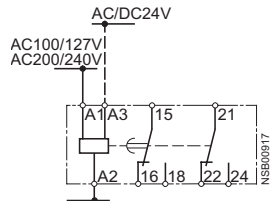
ON-delay, 3RP15 25-1B
also for 42...48/60 V AC/DC
(see page 8/13 3RP15 25-1BR30)

3RP15 05-.B



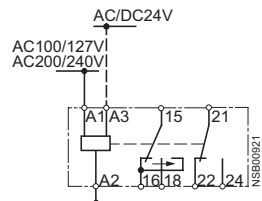
Passing make contact

3RP15 05-.B



ON-delay and instantaneous
contact

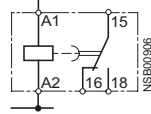
3RP15 05-.B



Passing make contact
and instantaneous contact

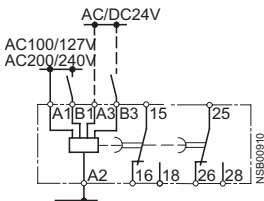
3RP15 40-.A

AC/DC24V
AC/DC100/127V
AC/DC200/240V



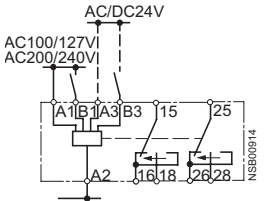
OFF-delay
without auxiliary voltage

3RP15 05-.B



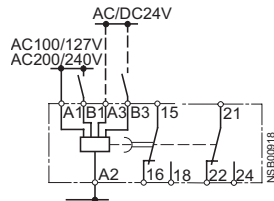
OFF-delay
with auxiliary voltage

3RP15 05-.B



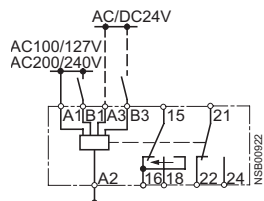
Passing break contact
with auxiliary voltage

3RP15 05-.B



OFF-delay
with auxiliary voltage
and instantaneous contact

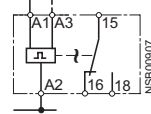
3RP15 05-.B



Passing break contact
with auxiliary voltage
and instantaneous contact

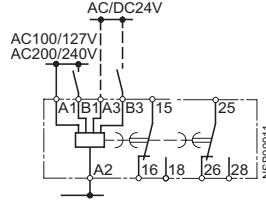
3RP15 55

AC/DC24V
AC/DC42V...48V
AC/DC60V
AC100/127V
AC200/240V



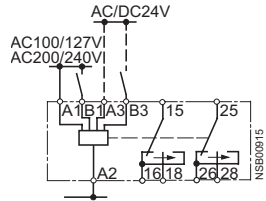
Clock-pulse relay

3RP15 05-.B



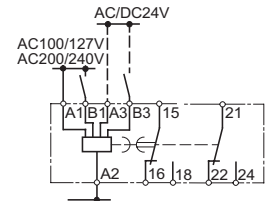
ON-delay and OFF-delay
with auxiliary voltage

3RP15 05-.B



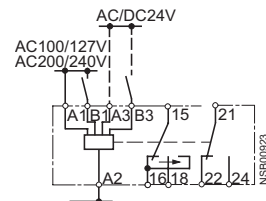
Pulse-forming
with auxiliary voltage

3RP15 05-.B



ON-delay and OFF-delay
with auxiliary voltage
and instantaneous contact

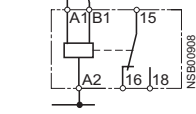
3RP15 05-.B



Pulse-forming
with auxiliary voltage
and instantaneous contact

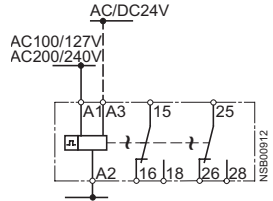
3RP15 05-.AW30

AC/DC24...240V



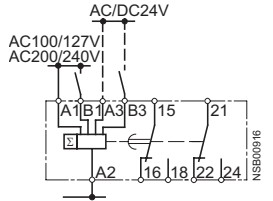
Multi-function relay
(same functions as 3RP15 05-1A)

3RP15 05-.B



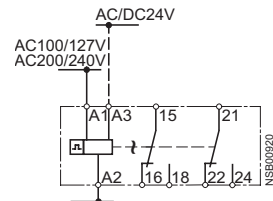
Flashing

3RP15 05-.B



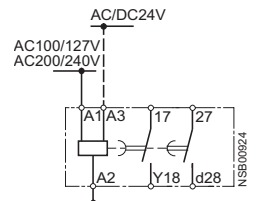
Additive ON-delay
with auxiliary voltage
and instantaneous contact

3RP15 05-.B



Flashing and instantaneous
contact

3RP15 05-.B

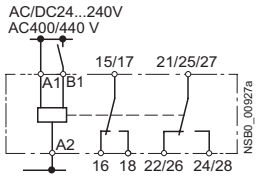


Wye-delta function

3RP Timing Relays

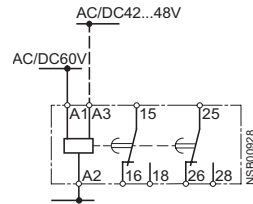
3RP15 timing relays in industrial enclosure, 22.5 mm

3RP15 05-.BW30/-1BT20/-RW30



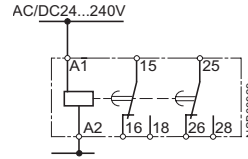
Multi-function relay
(for functions see function table)

3RP15 25-.BR30



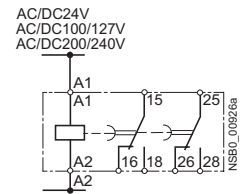
ON-delay

3RP15 25-.BW30



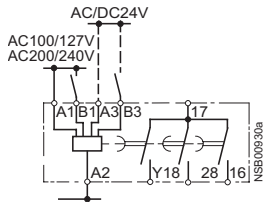
ON-delay

3RP15 40-.B



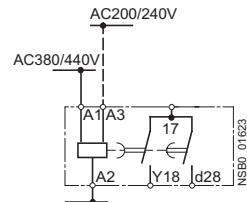
OFF-delay without
auxiliary voltage

3RP15 60-.S



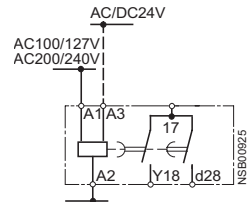
Wye-delta timing relay with
overtravel function (idling)

3RP15 7.-.M20



Wye-delta timing relay

3RP15 74, 3RP15 76



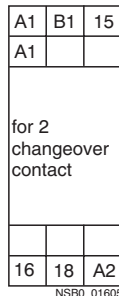
Wye-delta timing relay

Position of the connection terminals

3RP15 05-.A



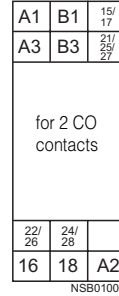
3RP15 05-.AA40



3RP15 05-.AW



3RP15 05-.BP/-BQ



3RP15 05-.BW



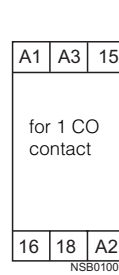
3RP15 05-.BT



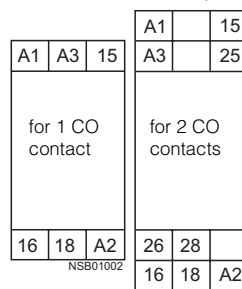
3RP15 05-.RW



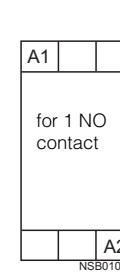
3RP15 1.



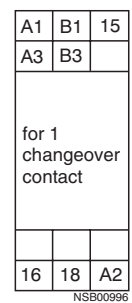
3RP15 25-1A. or -1B. 1)



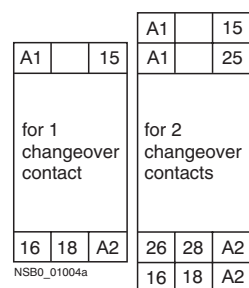
3RP15 27



3RP15 3.



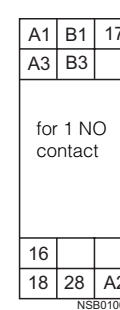
3RP15 40



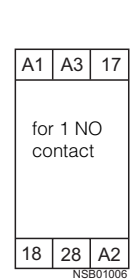
3RP15 55



3RP15 60



3RP15 7.



Note: All the diagrams show the view onto the connection terminals.

¹⁾ Depending on the version.

3RP Timing Relays

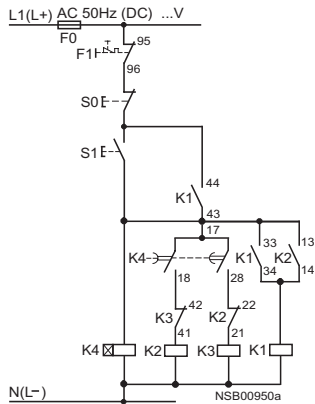
3RP15 timing relays in industrial enclosure, 22.5 mm

3RP15 circuit diagrams

Control circuits (example circuits)
with 3RP15 74 and 3RP15 76 wye-delta timing relays

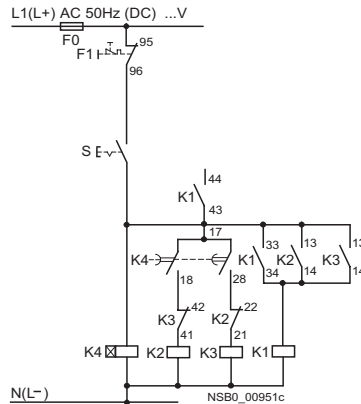
For momentary-contact operation

Size S00 to S3



For maintained-contact operation

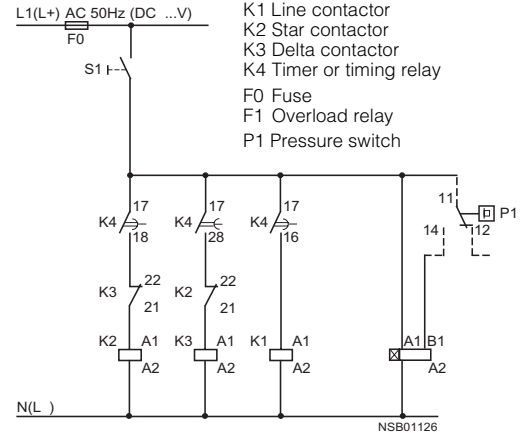
Size S00 to S3



Control circuit (example circuit)
with 3RP15 60 wye-delta timing relays

Legend:

- S0 Button "OFF"
- S1 Button "ON"
- S Maintained-contact button
- K1 Line contactor
- K2 Star contactor
- K3 Delta contactor
- K4 Timer or timing relay
- F0 Fuse
- F1 Overload relay
- P1 Pressure switch



Note:
The contact element 17/18 is only closed in the wye stage; the contact element is open in the delta stage as well as in the de-energized state.