



Product Data Sheet

DC127

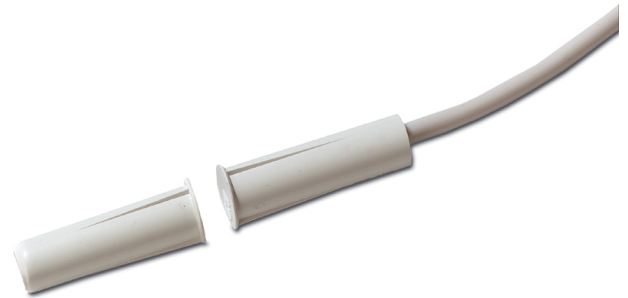
Recessed mount contact - press-fit - wide gap 31 mm

Press-Fit Contact

The DC121 press fit switch is an 11 mm diameter magnetic contact with wire leads. Use no glue or screws to mount; small ribs on the housing hold the contact in place. Heavy-duty housing resist crushing from swelling wood. An extra wide gap version, DC127, is available for applications that may be prone to false alarms caused by loose fitting doors. The DC222 is a variant with a change-over contact type.

Applications

For recessed applications, either indoor or outdoor. Also useful in protecting china cabinets or closets, double-hung windows and aluminium windows.



Standard Features

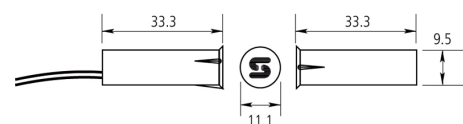
- 11 mm press-fit mounting; no screws or glue needed
- Attractive, added security of recessed installation
- Heavy-duty housing resists crushing
- Available in different cable lengths
- Tamper loop provided

DC127

Recessed mount contact - press-fit - wide gap 31 mm

Specifications

Operating gap	31 mm (max.)
Connections	4 wires, 2 m
Contact type	NC
Dimensions	
Dimensions (Ø x L)	11 x 33 mm
Colour	White



Ordering Information

Part No.	Description
DC127	Recessed mount contact - press-fit - wide gap 31 mm
DC121	Recessed mount contact - press-fit

