

Schematics

5TT4 101-



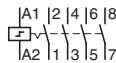
5TT4 102-



5TT4 103-



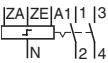
5TT4 104-



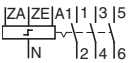
5TT4 105-



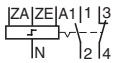
5TT4 122-0



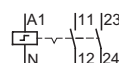
5TT4 123-0



5TT4 125-0



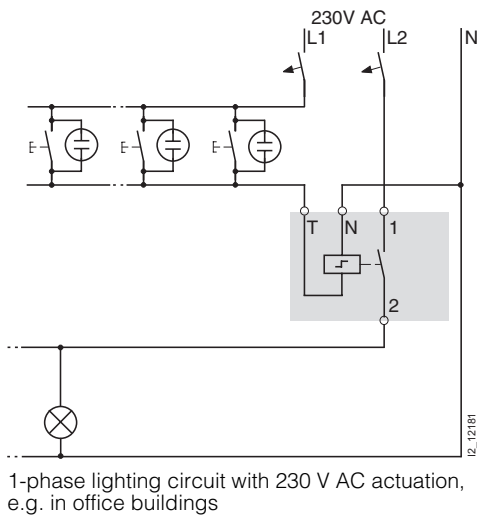
5TT4 142-
5TT4 132-0



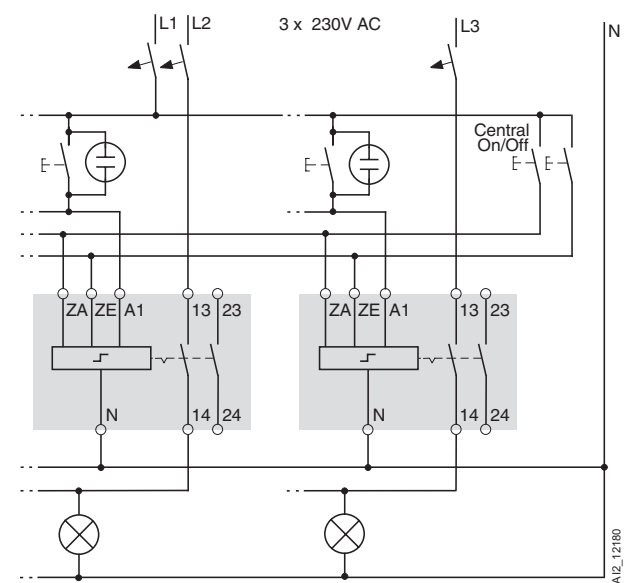
5TT4 90



Switching example: 5TT4 101-0



Switching example: 5TT4 122-0 with central ON/OFF switching



With the 2-pushbutton central "ON" and "OFF" function, all remote control switches can be switched on or off from a central point, e.g. at the start and end of work. A time switch with a one-second pulse can also be used if desired. Once a central on/off switching operation has been executed, the remote control switches can also be switched on and off locally at any time. The phase relation of ZA, ZE and A1 is arbitrary.