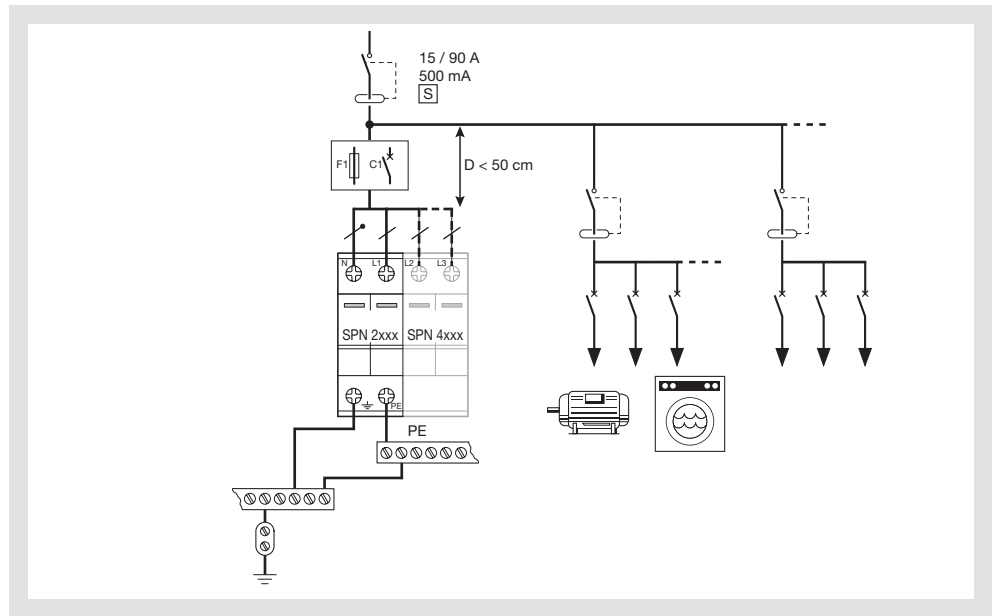


- (F) Parafoudre
- (GB) Lightning surge arrester
- (D) Überspannungsableiter
- (I) Scaricatore
- (E) Pararrayos
- (P) Limitador de sobretensões

- Notice d'instructions
- User instructions
- Bedienungsanleitung
- Istruzioni d'uso
- Instrucciones de uso
- Instruções de instalação

SPN 215D/R, SPN 415D/R, SPN 240D/R, SPN 440D/R, SPN 265R, SPN 465R

NF EN 61 643-11 IEC 61 643-11 DIN VDE 0675-6-11	Type 2 Class II "C" Ableiter
Un	230/400 V~
f	50/60 Hz
F1 max	125 A gL/gG
F1 max SPN x65R	160 A gL/gG
IP	20
∅ °C	-40 / +55 °C



	I_n (8/20 μ s)	I_{max} (8/20 μ s)	U_p	U_c (50/60Hz)	C_1 max hager	I_{cc}	
SPN 215D/R SPN 415D/R	5 kA	15 kA	≤ 1 kV	275 V~	32 A "C"	10 kA	SPN 015D/R SPN 040N
SPN 240D/R SPN 440D/R	15 kA	40 kA	$\leq 1,2$ kV	275 V~	32 A "C"	20 kA	SPN 040D/R SPN 040N
SPN 265R SPN 465R	20 kA	65 kA	$\leq 1,5$ kV	275 V~	32 A "C"	20 kA	SPN 065R SPN 065N

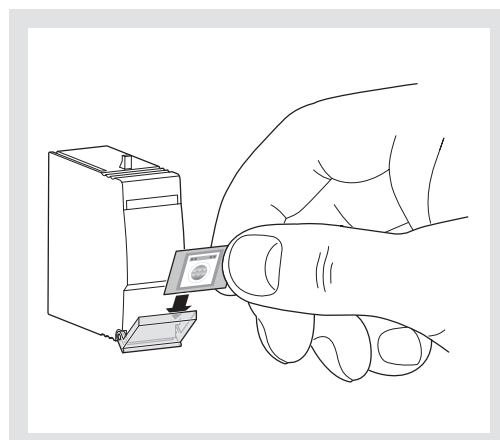
SPN xxx D OK

SPN xxx R OK

SPN xxx R

mini L, N, PE, \oplus	2,5 mm ²	
maxi L, N, PE, \oplus	25 mm ²	35 mm ²

Pozidriv 2 5 Nm



SPN xxx R

I mini	250 V AC / 0,5 A 250 V DC / 0,1 A
I maxi	125 V DC / 0,2 A 75 V DC / 0,5 A